



MAG BIOSYSTEMS

A PHOTOMETRICS® SYSTEMS BRAND

Dual-Cam™

SIMULTANEOUS- ACQUISITION SOLUTION

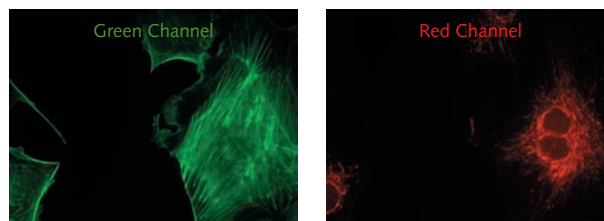
The MAG Biosystems™ Dual-Cam takes the emission exiting the microscope and splits it into two separate channels. Each channel is then projected onto a CCD. This is crucial for applications where the full field of view for each emission channel is required. The Dual-Cam is an excellent solution for high-content screening. Simultaneous multichannel imaging is essential to achieve quantitative emission ratiometric imaging.



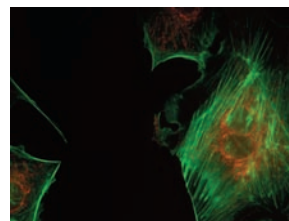
FEATURES

- Simultaneous acquisition of two full field-of-view fluorescence emission images in a single snapshot
- Emission can be separated by wavelength, polarization, or amplitude
- Increases scanning speeds by factor of two without sacrificing resolution
- Easily mounts to most microscopes
- Removable filter slider makes configuring different experiments easy
- Bypass mode allows user to send all of the emission light to a single detector
- Works with many Photometrics® and QImaging® cameras*

* Please contact your local Photometrics or QImaging sales manager to verify compatibility.



Color Overlay



DUAL-CAM SPECIFICATIONS

Wavelength sensitivity	400 to 750 nm
Efficiency per image*	88 to 92%
Operation temperature	-10 to 50°C
Detector attachment	C-mount (male)
Front attachment	C-mount (female)
External mounting option	¼-20 tapped hole on bottom of unit
Dimensions	2.5" diameter x 8.5" height
Weight	3 lbs
Filters	Emission/barrier, neutral density, polarization; 1" (25.4-mm) max diameter; 0.39" (9.9-mm) max thickness
Patents	USA: 5,926,283 and 5,982,497; Australia: 731,476; Canada: 2,294,840; Other foreign patents pending

* Transmission values are also modified by filter transmission.

Note: All specifications are typical and subject to change.

APPLICATIONS

- Real-time multicolor imaging
- FRET imaging
- Calcium imaging with fluo-3/Fura Red™ (Molecular Probes) or dual-emission indo-1 imaging
- Fluorescence polarization/anisotropy imaging
- Simultaneous fluorescence/DIC imaging
- Drug discovery with Cy3/Cy5
- Single-molecule fluorescence (SMF)
- pH imaging with SNARF
- Multiwavelength TIRF
- Multiwavelength FLIM
- Voltage sensing with di-4-ANEPPS
- Other emission ratio analyses
- Fluorescence *in situ* hybridization (FISH)
- cAMP imaging with FICRHR
- Multichannel confocal microscopy when used in conjunction with a spinning-disk confocal



MAG BIOSYSTEMS

www.MAGbiosystems.com

info@MAGbiosystems.com

Toll free 877.467.8467

USA 520.889.9933

Asia Pacific +65.6841.2094

France +33.1.60.86.03.65

Germany +49.0.89.660.779.3

Japan +81.3.5639.2731

UK +44.1628.890858